

1-4-3-008-040-0000 756 Mokulua Dr, Kailua 96734

MLS#: 201518973
 Status: **Sold**
 Land Tenure: FS - Fee Simple

Region: Kailua
 Nghbrhd: LANI KAI

Bldg Nm:
 Fee Options:

Sold Price: **\$5,500,000**
 List Price: **\$6,250,000**



General Information

Prop Type: Single Family
 Style: Detach Single Family
 Prop Cond: Excellent
 DOM: 111
 Furnished: Partial
 Fract Own: No

Sqft Information

Grg/Car Sqft: 204
 Sqft Liv: 3,801
 Lanai Sqft:
 Sqft Oth:
 Total Sqft: 3,801
 Land Sqft: 10,346
 Lot Acres: .238

Bldg Information

Beds: 6
 Baths: 4/0
 New Dev: No
 Ttl Park: 3
 Stories: Two
 Yr Rmdled: 2010
 Year Built: 1990

School Information

Elem:
 Middle:

Additional Information

View: Coastline, Mountain, Ocean, Sunrise
 Zoning: 03 - R10 - Residential District
 Flood Zone: Zone X
 Location: Other
 Lot Desc: Other
 Set Backs: C&C, Of Record
 Prop Frnt: Ocean, Waterfront
 Easements: Other
 Land Recorded: Land Court

Listing/Office Information

Listing Date: 10/21/15
 Possession: At Closing
 Office: Choi International
 Co-List Office: Choi International
 Corp Office Lic #: RB-11802

Remarks

Pub Rmks: HIGHLY MOTIVATED SELLER – MAKE YOUR OFFER NOW FOR THE BEST PRICE EVER! OCEANFRONT – steps to Lanikai Beach #1 U.S. Beach 2014 (Trip Advisor). Villa Soluna, designed by Jeff Long, one of the most incredible homes in Lanikai! Soaring ceilings & windows, Egyptian Limestone floors, European furnishing & exquisite master en suite. Move in ready – sold "turn key" w/ furnishings. Oceanfront expansive lanai perfect to bask in the warm Hawaii sun w the ocean & beach just steps away.

Mgmt Co:
 Community Assn:
 Public Report #:
 Mgmt Co #:
 Assoc Phone:

Features

Story Type: Two
 Parking: 3 Car+, Carport, Driveway
 Roofing: Tile
 Topography: Level
 Security Feat: Key
 Pool Feat: None
 Amenities: Bedroom on 1st Floor, Entry, Full Bath on 1st Floor, Landscaped, Maids/Guest Qrters, Patio/Deck, Sauna, Storage, Wall/Fence
 Utilities: Cable, Connected, Internet, Public Water, Telephone
 Inclusions: AC Split, Blinds, Book Shelves, Cable TV, Ceiling Fan, Chandelier, Dishwasher, Disposal, Drapes, Dryer, Fireplace, Range Hood, Range/Oven, Refrigerator, Security System, Smoke Detector, Solar Heater, Washer
 Exclusions: Other
 Disclosures: Property Disclosure Stmt
 Road Frontage: County Rd, Paved Rd
 Flooring: Marble/Granite, Other
 Construction: Above Ground, Concrete, Double Wall, Masonry/Stucco

Room Information

Room	Lvl	Description	Room	Lvl	Description
Other			Lanai, Open		
Media Room			Family Room		
Dining Area					

Tax & Financial Information

TMK: 1-4-3-008-040-0000
 Taxes/Mnthly: \$2,413
 Tax Year: 2015
 Home Exempt: 0
 Tax Assess Imp: \$1,526,300
 Tax Assess Lnd: \$3,299,400
 Tax Assess Tot: \$4,825,700
 Terms Acceptable: Cash, Conventional
 Rent Inc Mthly:
 Spcl Sales Cond: None

Sold Information

Sold Date: 02/11/16
 Buy Off:
 Concessions:
 Cont Acc Date: 01/04/16
 Sold Price: **\$5,500,000**
 Buyer Financing: Cash
 DOM: 111

Click on the arrow to view Additional Photos



Gorgeous Lanikai oceanfront estate - "Villa Soluna". A custom designed Jeff Long home featuring the finest quality and luxurious amenities that will captivate

Great Room opens to oceanfront lanai and yard along turquoise ocean! Soaring ceilings, glorious light from amazing windows throughout!

Ocean view from upper landing and sitting area. Beautiful views include ocean, mountains, Flat Island, and the Mokulua Islands! Watch the kayaks, canoe & stand-up relaxing...just perfect!

Living Room features a fireplace, art niches, huge custom mirrors, and European furnishings and chandelier. Spacious, comfortable,

you and your guests as you enjoy the relaxing, healthy LANIKAI lifestyle.

paddlers, turtles, and seasonal whales!



HiCentralMLS

Oceanfront Dining Room located off Living Room and adjacent to the Gourmet Kitchen. Great for indoor or outdoor enjoyment day or night. Perfect spot for a full moon party where you can watch the full moon rise over the Mokulua Islands...an amazing sight if you have never experienced this one-of-a-kind Lanikai location!



HiCentralMLS

Dining Room near kitchen and mobile media area with additional sliding door opening to oceanfront deck/lanai. Bright, inviting, relaxing. Ideal spot for entertaining family & guests and enjoying this gorgeous home.



HiCentralMLS

Dream kitchen with custom Teak renewable wood cabinetry, Miele appliances, Bosch refrigerator, built-in dishwasher, glass top stove, oven, warming drawers, KWC hardware, Kohler sinks, custom glass pantry door, Caesarstone counters. The terrific ocean view makes cooking a pleasure!



HiCentralMLS

Lanikai ocean view from kitchen sink with dishwasher and wine cooler below. What a view while you prepare a delicious meal. Twinkling Swarovski crystal lights frame the 3-stool casual bar area.



HiCentralMLS

Oceanfront bedroom on main floor with European furnishings, 1200 threadcount organic sheets and organic linens throughout. A/C, custom Unilox windows, and elegant window coverings.



HiCentralMLS

Master ensuite bath with Jacuzzi tub, walk-in steam shower, eco-white oak custom retreat and spa-like cabinetry, Italian turquoise glass tile, Hansgrohe fixtures, custom countertops, walk-in closet with safe. Watch the seasonal whales while soaking in the tub; enjoy the sounds of the ocean, dream and enjoy the Lanikai lifestyle.



HiCentralMLS

Ocean view from Master Bath...your own private luxury retreat and spa-like experience ready for your enjoyment and relaxation. 5-star resort living in the comfort of your own home!



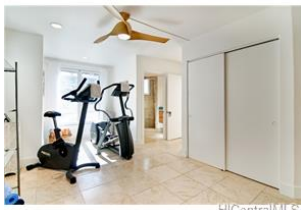
HiCentralMLS

Main Floor Bedroom #2 featuring A/C, silk black-out window coverings. Well suited for a media room, massage room, or guest bedroom.



HiCentralMLS

Bathroom with dual sinks, Italian glass tile, custom cabinetry, double shower with access from ocean side yard and lanai area.



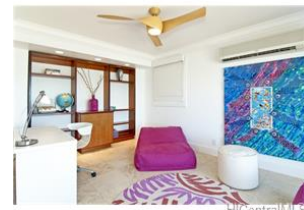
HiCentralMLS

Workout Room with Precor equipment, bike & elliptical, free weights, television. Includes bathroom with shower; large closets and storage. Also could be used as a 3rd bedroom on the main floor.



HiCentralMLS

Amazing Master Suite with oceanfront lanai offering spectacular morning sunrise views each day with different hues of pink, purple & gold, and various cloud formations. Views across the turquoise ocean to Flat Island, Mokulua Islands, and Koolau mountains. Fireplace and separate office / sitting area make this a very special private suite. A fabulous master bedroom awaits you - a dream come true in paradise!



HiCentralMLS

Sitting area, office, nanny & nursery space located next to Master Bedroom area. Features A/C, privacy and ocean views.



HiCentralMLS

Upper Level Bedroom #4 with oceanfront lanai where you can watch the beautiful sunrise while enjoying your morning coffee. Features A/C, linens, and large closet.



HiCentralMLS

Upper Level Bedroom #5 with A/C, custom window coverings, European furnishings, 1200 threadcount



HiCentralMLS

Your own private ocean resort! New Travertine Lanai / Deck with teak dining and lounge furniture with Sunbrella custom cushions. Spacious grassy oceanfront yard with tropical landscaping creates this fabulous retreat



HiCentralMLS

SWIMMING is amazing with tropical fish and "Honu" sea turtles always right out in front...truly a tropical paradise right at home!

ready for you to enjoy
everyday.



HiCentralMLS

Resort-style oceanfront yard with Traverine lanai looking towards the Mokulua Islands. Relax, enjoy being with friends while you soak up the sun, fresh salt air, tropical breezes - just step outside and find your favorite spot!



HiCentralMLS



HiCentralMLS

View of Villa Soluna from the ocean - fabulous windows, private balconies, and expansive Traverine lanai. This is a one-of-a-kind Lanikai estate on the ocean. Welcome Home!



HiCentralMLS

A rare opportunity to make this exceptional oceanfront property your home or tropical retreat.

© HiCentral MLS, Ltd.®. All rights reserved. Information herein deemed reliable but not guaranteed. Generated on 11/30/2017 11:18:54 AM

©2017 HiCentral MLS, Ltd.®. All rights reserved. Information herein deemed reliable but not guaranteed.